



---

*Truly Multi-Disciplinary*

# Corporate Profile

# About Us

## Who We Are

Newtech Consulting Group was established in 1983 by a group of highly qualified professionals of diversified engineering, industrial and business backgrounds.

As an independent consultant, Newtech has established a reputation of high professional competence in the fields of Engineering, Architecture, Industry, Project Management, Rural & Urban Development in addition to Social and Environmental Studies.

## Our Vision

Newtech is a Leading Consulting Firm and one of the most important firms in Africa and the Middle East operating in this field.

## Our Mission

To provide a variety of high quality service by highly qualified, well-trained and fully loyal professionals working in an attractive environment that is up-to-date with the evolution of technology while expanding locally and globally to achieve sustainable growth of our owners' equity in full compliance with corporate governance and social responsibility.

## Our Registrations

**Newtech** is registered with a large number of professional and engineering bodies in addition to most Arab, African, Islamic and International Development & Financing Agencies, Governments and relevant institutions in different countries.

**Newtech** is also a member of:

- **FIDIC** Group of African Members (**GAMA**)
- Federation of African and Arab Consultants (**FCAA**)
- The Federation of African Consultants (**FECA**)
- The Arab Association of Engineering Consultants
- Federation of Consultants from Islamic Countries (**FCIC**)

**Newtech** is an **ISO 9001:2008** certified company



# Corporate Profile

# Lines of Activities

## Fields of Services

Newtech provides integrated consultancy services in the following fields:

- Transport
- Irrigation & Agriculture
- Water Supply & Sanitary Engineering
- Buildings & Physical Planning
- Industry
- Rural & Urban Development
- Environment
- Power & Electricity
- Energy & Mining
- IT & Telecommunications

## Scope of Services

Newtech offers a diversified scope of the services to meet the various Clients' needs. These include:

- Market and Project Identification Studies
- Feasibility Studies
- Detailed Design & Preparation of Performance Specifications
- Preparation of Tender Documents
- Assistance in Tendering & Procurement
- Supervision of Construction and Erection
- Project Management
- Rehabilitation Studies
- Evaluation of Assets
- Social and Environmental Impact Studies
- Design and Implementation of Management Systems
- Institutional and Corporate Restructuring
- Management Development
- Provision of Technical Assistance

# Corporate Profile



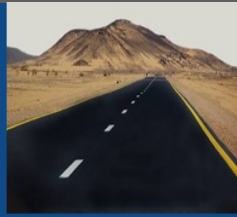
# Capability Statement

# Corporate Profile

## Transport

Newtech is engaged in the planning and engineering of all modes of transportation including air, river & marine ports, river transport, railway, pipeline, roads and bridges. Involvement in the road sector covers all types of highways as well as rural and feeder roads. Newtech's work in the transport field covers different countries with diversified climatic, terrain and geological conditions.

Services provided for this sector includes but are not limited to transport policies & organization, traffic planning & studies, pavement evaluation, engineering design and construction supervision. Through over 3 decades in the field, Newtech has been able to provide a considerable share of the engineering requirements for the vast development in the Transport Sector that Africa and the Middle East has witnessed in the past few decades.



## Irrigation and Agriculture

Africa and the Middle East have vast agricultural potential and water resources with some of the world's largest permanently irrigated agricultural projects. Newtech has therefore, largely benefited from the regional and international practices and standards that are highly developed and are applied for the different types of irrigation schemes.

Newtech's approach is based on recognition of the advancement in irrigation and agricultural technology and practices that produce not only more, but also higher quality plants with less water.

The Company has studied, designed and supervised the construction of new projects and rehabilitation works of major agricultural and irrigation projects that extended for tens of thousands of hectares.

The services provided covers different components of these projects, including agronomy & crop production, topographic surveys, soil investigations and classification, water requirements, irrigation schemes (canals networks, control structures, pumping stations and related electromechanical works), extension & supporting services, in addition to other agricultural related aspects such as livestock and animal production, fattening & animal husbandry as well as various other income-generating activities.



## Water Supply and Sanitation

Newtech has developed major Water Supply and Sanitation projects for both rural and urban purposes. Water supply projects undertaken by Newtech includes the utilization of both underground and surface sources. In addition, Newtech has studied and designed many major water conveyance systems, conventional and non-conventional water treatment systems and major sewerage networks and facilities.

Newtech has vast experience in design of water supply solutions for areas of scarce water resources. This includes dams, haffirs and other water harvesting structures.

Newtech has also developed different types of sanitation systems which include domestic and industrial waste disposal. The Company has successfully utilized appropriate technologies in developing the sanitation systems for rural and low cost applications.





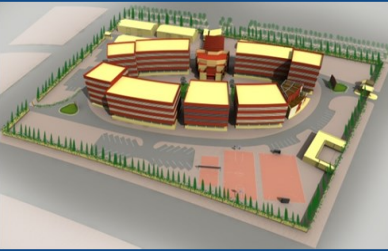
# Capability Statement

# Corporate Profile

## Buildings & Physical Planning

The scope of services provided by Newtech in this area covers the full range of services including physical planning, architectural, structural and electromechanical works for buildings. Newtech has won several architectural prizes and conducted various assignments for residential, industrial, commercial, educational, health and other civil works and auxiliary facilities. Being a socially responsible firm, Newtech gives high consideration for the development of low-cost building materials and construction techniques.

Newtech also adheres to the international best practices in the use of green and sustainable solutions as well as its firm's commitment to environmental preservation and appropriation of local construction techniques and resources. Our services are tailored to meet the requirements of all project purposes and scales be it small, medium or large scale.



## Rural & Urban Development

Newtech provides diversified services for rural and urban development, addressing the integrated nature of requirements in this field. Questions of development in rural and urban context, are intricately meshed with their respective social setting. Our engineering projects are thus sensitized towards the issues of appropriate techniques, use of local resources, reliance on renewable energies, involvement of beneficiary communities, the role of women in development, sustainability and environmental soundness. Newtech has always been able to mobilize experts from different fields and coordinate their professional expertise in order to implement integrated development projects. These projects benefited from latest findings of research work and attempted application of improved techniques in areas of construction, agriculture, community mobilization, etc.



## Environment

Environmental & Social Impact Studies of all major projects is considered by Newtech as a prerequisite to secure the sustainability of development programmes. Newtech has carried out ESIA's for most of the major infrastructure and development projects it has undertaken. The impact to the physical and sociological environment of projects are undertaken and the necessary mitigation and monitoring measures are designed. Newtech considers the role of Women in Development (WID) as an integral part in major projects. Services undertaken include Environmental Baseline Studies (EBS), Environmental Risk Assessment (ERA), Environmental Management Plans (EMP), Environmental Engineering, Mitigation & Waste Management and Resettlement Action Plans (RAP). Newtech has successfully accomplished a vast number of onshore and offshore Environmental studies for a large number of projects.



# Capability Statement

# Corporate Profile

## Industry



Newtech has provided integrated consulting services to the different industrial sectors including: Food & Agro-Industry, Textile, Building Materials, Chemicals & Plastics, Manufacturing in addition to others. The services provided by Newtech covers all stages of industrial projects preparation up to commissioning of plants, utilities and all related civil works.

Newtech has also acquired diversified experience in the preparation and management of turn-key contracts for industrial projects. Other consultancy assignments provided to this sector includes Evaluation of Assets, Design, Corporate Structuring Studies and Administrative & Management Systems Development.



## Power and Electricity

Newtech provides integrated and multi-disciplinary consultancy services for the Power & Electricity Sectors to serve different project scales and Clients' needs. Services offered by Newtech cover the following fields:

- Power Design Solutions (HV, MV and LV)
- Hydro-Electric Generation
- Transmission Lines
- Renewable Energy Solutions (e.g. Solar Energy Systems)
- Electrical and Instrumentation for Infrastructure Design
- Building & Street Lighting Design
- Earthing and Lightning Protection Design
- Systems Design (ICT, SCADA, Security, CCTV, PAGA and Fire Detection and Alarm)



## Mining and Energy

Africa has witnessed fast growing energy and mining activities during the last decade. Newtech has been able to provide a considerable share of the engineering, environmental and socio-economic requirements for the vast development in the mining and energy sector that the region has witnessed. Services provided by Newtech include Feasibility Studies, Socio-Economic & Environmental Studies, Detailed Design, Construction Supervision and Project Management services. Newtech has gained great expertise in developing artisanal mining activities into structured, efficient and safe operations through state-of-the-art techniques.





# Capability Statement

# Corporate Profile

## IT and Telecommunications

Newtech offers a wide range of services for the IT & Telecom Sector. This includes studies, design and assistance in implementation for:

- Market and Field Surveys for the IT and Telecom Industry
- Integrated Projects (i.e. Voice, Image and Data Systems)
- Systems Integration for companies and institutions
- Local and Distant Networking Solutions (Wired and Wireless)
- Integrated Solutions for Network Security Systems
- Data Centres
- IPTV Solutions
- Internet Communication Services
- Information Security Management Systems and Projects
- Risk Management
- Prevention of operations and early detection of penetration
- E-Government Systems
- Training in the field of Information Security



## Oil and Gas

Newtech provides extensive services for the Oil and Gas Sector for both upstream and downstream operations. Our specialization covers a wide range of aspects including Process Engineering, Instrumentation, Control & Safeguarding Systems, Pressure Vessels & piping, Rotating Equipment, Electrical Distribution, Power Generation, Telecoms, Structural Engineering and Wells Engineering. Newtech has also developed great expertise in HSE for the Oil & Gas Industry.

The Company also offers professional services for the Environmental and Social Impact Studies as well as Waste Management & Mitigation of Risks.



## Management Consultancy & Business Process Re-Engineering Services

In order to complement the conventional engineering consultancy services offered by Newtech, the firm offers specialized Management Consultancy and Business Process Re-Engineering (BPR) services, which are directed to help businesses analyze their current ways of operating through formulation of new strategies to meet their business goals.

Services offered include Marketing & Sales Planning, Corporate Financing, Organizational Structuring, Enterprise Resource Planning and appropriation of business technology.

Our expertise in this area comprises various business fields and includes a broad range of Clientele for the Governmental & Private Sector, Regional & International Institutions and NGO's.



# Global Orientation

## Registrations with Regional and International Funding & Development Agencies

In over 3 decades in business, Newtech has been able to establish and maintain a significant status with many Regional and International Financing and Development Agencies. Newtech has been providing consulting services for a diversified large number of clients, including governmental, private, regional and international organizations. Newtech is therefore very familiar with the requirements and procedures of the different Clients. Regional & International Funding and Development Agencies which financed the different projects undertaken by Newtech include:

- The World Bank
- African Development Bank and Fund
- IFAD
- Islamic Development Bank
- Kuwait Fund for Arab Economic Development (KFAED)
- Arab Bank for Economic Development in Africa (BADEA)
- Arab Fund for Economic and Social Development (AFESD)
- OPEC Fund for Economic Development (OFID)
- The European Development Fund
- United Nations Industrial Development Programme (UNIDO)
- United Nations High Commissioner for Refugees (UNHCR)
- Danish International development Agency (DANIDA)
- Arab Authority for Agricultural Investment & Development (AAAID)
- Japanese International Cooperation Agency (JICA)
- The World Food Programme (WFP)
- Abu Dhabi Fund for Development
- Saudi Fund
- Department for International Development (DFID)
- United Nations Children Fund (UNICEF)
- United Nations Development Programme (UNDP)





# Global Orientation

## Associations and Collaborations

Newtech has associated and worked in collaboration with several international and national consultancy firms and institutions including:

- Sheladia Associates (USA)
- HTSPE (UK)
- The Louis Berger Group (USA)
- TAMS (USA)
- De Leuw Cather (USA)
- SNC Lavalin, (Canada)
- AACM (Australia)
- McPherson Consulting Group (Australia)
- Agrar Und Hydrotechnik (Germany)
- Dorsch Consult (Germany)
- Norconsult International (Norway)
- Mott MacDonald (UK)
- Sir Alexander Gibb & Partners (UK)
- Brian Colquhoun & Partners (UK)
- Landell Mills (UK)
- Euroconsult (The Netherlands)
- DHV (The Netherlands)
- HVA International, (The Netherlands)
- Carl Bro International A/S (Denmark)
- Firriri Engineering House (Italy)
- Korea Engineering Consultants Corporation KECC (South Korea)
- Dar Alhandasah – Shair & Partners (Egypt)
- Saleh & Hegab (Egypt)
- Ahmed Abdel Warith Consulting Engineers (Egypt)
- Conseil, Ingenieur et Developpment CID (Morocco)
- Associated Consulting Engineers (Lebanon)
- Consolidated Consultants Engineering and Environment - CCEE (Jordan)
- Gibb Africa (Kenya)
- Norconsult (Kenya)
- Tecnica Engenheiros Consultores (Mozambique)
- EM Consultants (Tanzania)
- The Gambia Engineering Consultancy Services - GAMECS (The Gambia)

## International Operations

Newtech has carried out and is currently undertaking global projects in various countries, including:



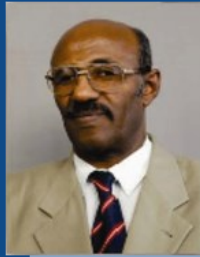
- Cote D'Ivoire
- Cameroon
- Democratic Republic of Congo
- Egypt
- Gambia
- Ghana
- Kenya
- Liberia
- Mozambique
- Nigeria
- Qatar
- Rwanda
- South Sudan
- Sudan
- Tanzania/Zanzibar
- UAE
- Yemen
- Zambia

# Corporate Profile

# Who's Who



**Eng. Mohamed E. Abdel Rahman**  
General Manager  
E: mohamed@newtech-consulting.ae



**Dr. Osman M. Elkheir**  
Chairman  
E: osman@newtech-consulting.ae



**Ms. Rajaa Lewis Gindi**  
Administration Manager  
E: rajaa@newtech-consulting.ae



**Eng. Mohannad S. Elsanousi**  
Marketing Manager  
E: m.elsanousi@newtech-consulting.ae



**Eng. Osman Mukhtar Rahama**  
Highways & Transportation Department Manager  
E: osman.mukhtar@newtech-consulting.ae



**Eng. Saaid M. Saaid**  
Bridges Department Manager  
E: saaid@newtech-consulting.ae



**Eng. Karori Elhaj Hamad**  
Manager, Water Resources and Agriculture  
E: karori.hamad@newtech-consulting.ae



**Eng. Wisal Mohamed Ali Awad**  
Integrated Projects Manager  
E: wisal.awad@newtech-consulting.ae

# Corporate Profile

# Who's Who



**Eng. Mohamed Hag Elnur**  
Snr. Projects Manager  
E: m.hagelnur@newtech-consulting.ae



**Eng. Gafar Ahmed Ali**  
Manager, Water Supply and Sanitation  
E: gafar.ali@newtech-consulting.ae



**Eng. Sara Ibrahim Elhag**  
Manager, MEP Unit  
E: s.ibrahim@newtech-consulting.ae



**Eng. Shadia Elsayed**  
Manager, Buildings and Physical Planning  
Department  
E: shadia.elsayed@newtech-consulting.ae



**Eng. Mohamed Siddig Khalil**  
Deputy Manager, Highways and Transportation  
Department  
E: mohamed.siddiq@newtech-consulting.ae



**Eng. Mohanad Faisal**  
Manager, IT Department  
E: mohanad.faisal@newtech-consulting.ae



**Eng. Iman Malik**  
Strategy Management Officer  
E: iman.malik@newtech-consulting.ae



**Prof. Mohamed Osman Hamza**  
Financial Consultant  
E: info@newtech-consulting.ae

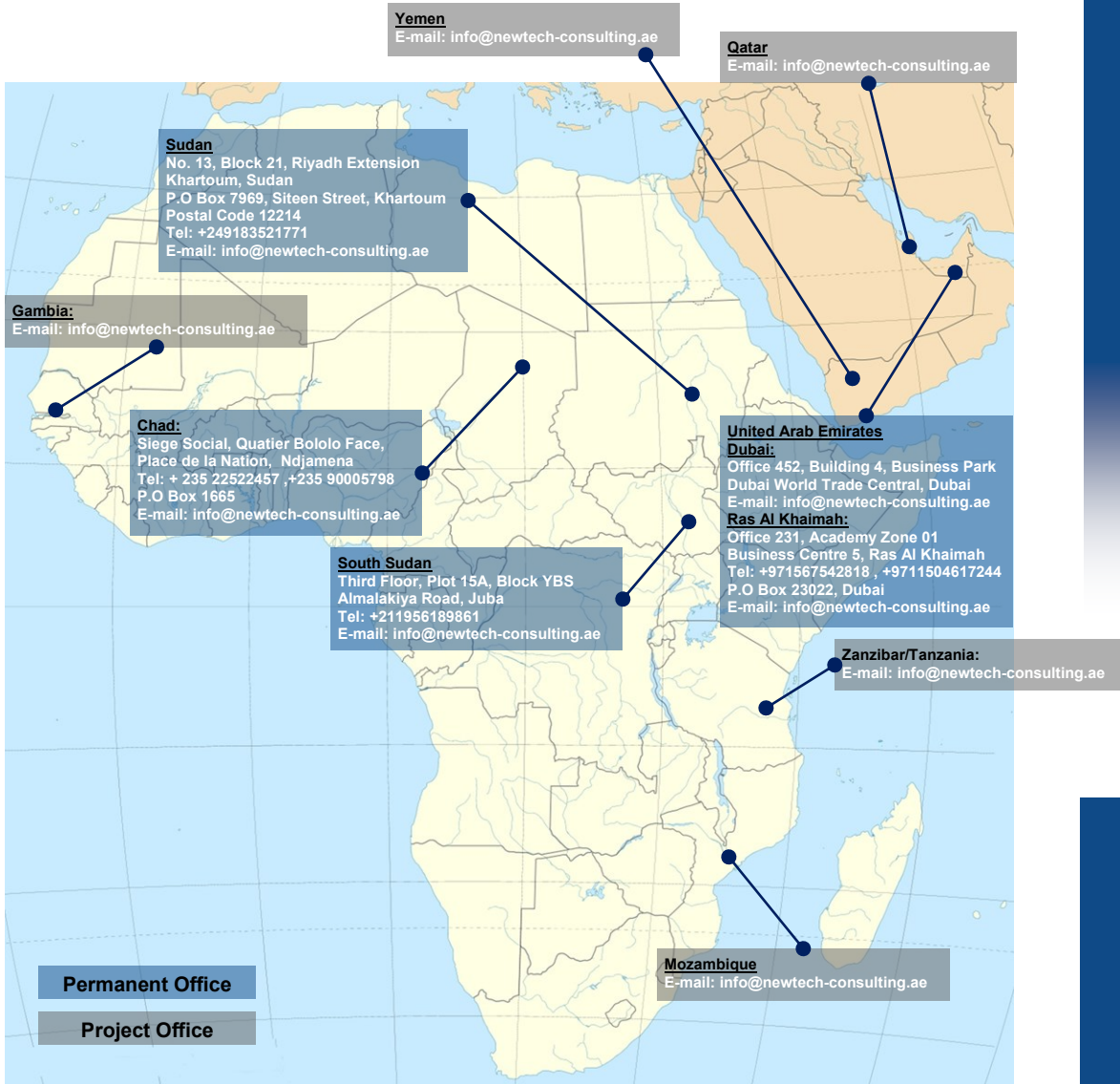
# Corporate Profile



# Contact Us

## Our Global Locations

In order to support its international operations, Newtech has established a number of registered offices in many countries across Africa and the Middle East. In addition to its permanent offices, the Company also has a number of Project Offices in several countries.



# Corporate Profile

Follow us on:

-  [Facebook.com/Newtechconsulting](https://www.facebook.com/Newtechconsulting)
-  [linkedin.com/company/Newtech-consulting-group](https://www.linkedin.com/company/Newtech-consulting-group)
-  [twitter.com/Newtech](https://twitter.com/Newtech)

[www.newtech-consulting.ae](http://www.newtech-consulting.ae)